

## COMPANY PROFILE:

**Corporate Structure** – AquFlow is a division of Precision Flow Technologies Inc., a sub-chapter S corporation established under the state laws of California, USA. The other divisions of Precision Flow Technologies Inc. include PumPortal which specializes in distribution of products imported from overseas on an exclusive basis.

Main Office -	AquFlow 1642 McGaw Avenue Irvine, CA 92614 USA
President / CEO-	Akbar (Al) Hussaini
Company Founded-	1972 in Plumbsteadville, PA by Mr. John Klembeth
Engineering-	Dublin, Pennsylvania, USA.
Assembly / Testing-	Irvine, CA, USA.
Casting / Machining-	Pennsylvania, USA.

Aquflow manufactures premier chemical metering pumps in Irvine, California. Founded in 1972 with the goal of making a new generation of hydraulic diaphragm metering pumps, AquFlow soon became known for its durability and performance in tough applications. After the acquisition of Hydroflo line of metering pumps in 2007 Precision Flow Technologies Inc. decided to re-launch the line under the Aquflow brand while preserving the original design, model numbers, serial numbers and manufacturing processes. Even with a new name and a new look customers expect and get the same legendary dependability, durability and ruggedness of the Hydroflo chemical metering pumps.

### Facility:

In our manufacturing facilities we use the most current MRP system that enables us to track inventory very closely from the incoming inspection to shipping. We also have a process in place to conduct regular physical inventory verifications to ensure we never run of small parts that may delay important orders. It is because of these tools and processes we can claim to be able to ship 90% of service parts orders the next day. We can also build test and ship standard commonly used pump models in less than a week.

For customization we added in-house capability to modify, develop tailor made solutions for your most complex chemical metering needs beyond regular or even specialized pumps. Whether your assembly requires special machining, welding, assembly or testing we have separate line to handle all custom projects without interrupting the regular production.

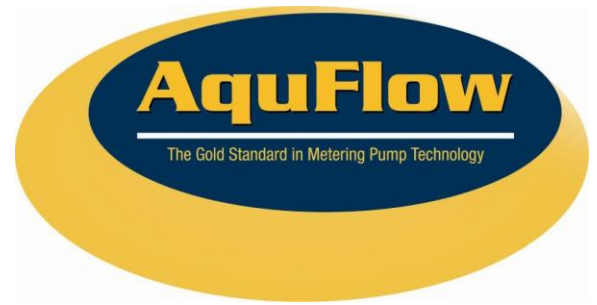
Some of our customers request special testing, and verification for their certifications. We have the instrumentation to perform most of such testing and provide documentation to make the process easy for our customers. Since we can track parts from the very beginning we can easily identify the batch for every part used in the pump. This also helps us in our very stringent Quality Assurance program to prevent any problem parts from being used to build a pump. We also manufacture pumps that comply with API 675 for the oil and gas markets.

Since we handle various sizes of pumps starting from the smallest <1.0 GPH to the large 4000 series monster we have a packaging and shipping facility that can handle these variety of shapes and sizes. From UPS boxes to wooden pallets to customized welded metal skids we can ship your pump in a durable package to endure the usual mishandling by carriers.

Due to the fact that we are located near many major international airports and sea ports we have the ability to ship freight to any location in the world safely, efficiently and quickly.

We have regular audits involving everyone from the line workers to the top management to ensure that not only are we conforming to the processes but also trying to improve these to make them more efficient to better support our customers. This unwavering commitment to customer satisfaction is the essence of our entire manufacturing facility.





## BRIEF HISTORY: AquFlow

- 1972: Founded by John P Klembeth who was the former Chief Engineer at BIF and Milton Roy to make a better, more efficient and long lasting hydraulic diaphragm metering pump under the name Hydroflo.
- 1983: Relocated from Dublin, PA to a much larger facility exceeding 50,000 square feet facility in Plumsteadville, PA.
- 1996: On September 2, 1996 Penn Process Technologies acquired the Hydroflo Corporation and integrated other accessories to have a complete product offering for the water and wastewater treatment market.
- 2001: On May 1, 2001 Nikkiso Pumps America acquired the Hydroflo pump line from Penn Process with the main purpose to enter the US market and promote their product line using the well established sales, marketing and manufacturing facilities that Hydroflo had by that time.
- 2007: In March, 2007 Precision Flow Technologies Inc. acquired the Hydroflo pump line and relocated the manufacturing facility to Irvine, CA. They also re-launched the legendary pump line as AquFlow.
- 2009: AquFlow extended the product line by adding Solenoid metering pumps for the low flow and low pressure applications.
- 2011: Relocated to a larger facility in Irvine to accommodate growth in business
- 2013: Product Extension with launch of low flow high pressure Series 900 pumps